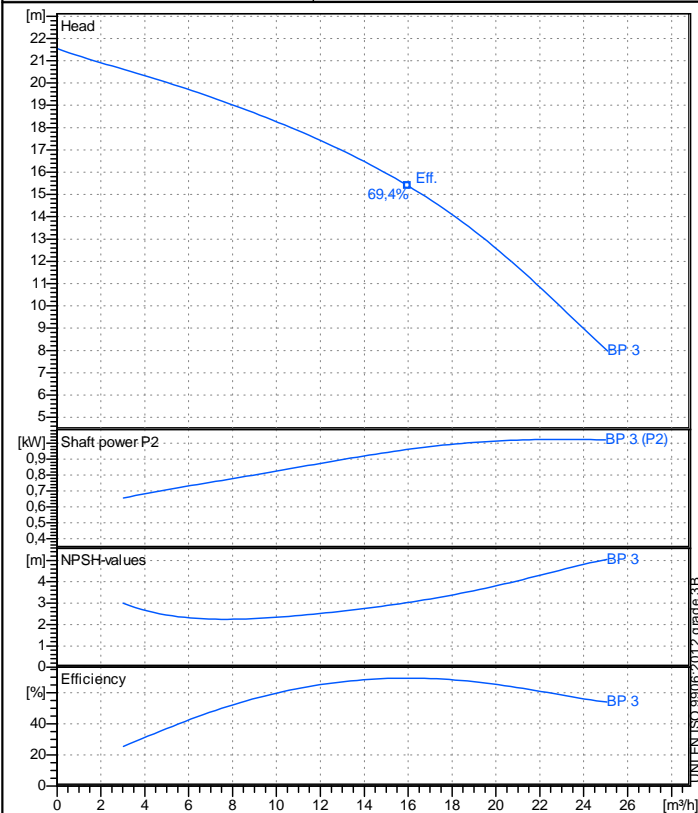


Receiver

From

Company name  
Respons. Department  
Person in charge  
Phone number  
Fax no  
E-mail address



### Operating data specification

Nominal flow	m³/h 0
Nominal head	m 0
Static head	m 0
NPSH - v value of plant	m 0
Inlet pressure	bar 0,09793
Fluid	Water, pure
Operating temperature t A	°C 20
Density at t A	kg/m³ 998,3
Kin. viscosity at t A	mm²/s 1,005

### Pump

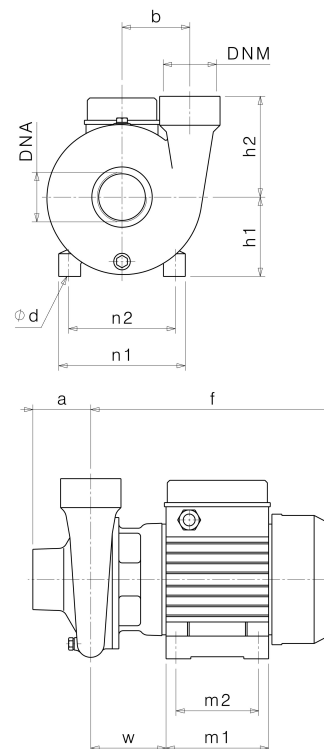
Pump name	BP 3		
Size			
Design			
Speed rpm	2850	No of stages	1
Impeller type			
Flow	Nominal	m³/h	
	Max-	m³/h	25,1
	Min-	m³/h	0
Head	Nominal	m	
	Max-	m	21,5
	Min-	m	7,97
Head H(Q=0)		m	21,5
NPSH 3%		m	
Max. working pressure		bar	2,11
Shaft power		kW	
Efficiency		%	
Max absorbed power		kW	1,0247

### Materials Pump

Shaf t	Stainless steel AISI 420 (1.4028)		
Impeller	Carbon steel G20Mn5 (1.6620)		
Pump body	Cast iron EN-GJL-200		
Support	Cast iron EN-GJL-200		
OR	NBR Rubber		
Mechanical seal	BXPB (Gra/Cer/NBR)		

### Dimensions in mm

a	70
DNA	G 2"
DNM	G 2"
f	294
h1	96
h2	122
m1	124
m2	100
n1	152
n2	125
od	9
w	88



Remarks:

Project	Project ID	Created by	Created on	Last update
			2019-02-13	